

# HIDDEN HARBOR ON THE BAY

A REPLAT OF LOTS 19 THROUGH 24, BLOCK 1 AND LOTS 1 THROUGH 5 AND LOTS 21 THROUGH 23, BLOCK 2, SAN CARLOS-ON-THE-GULF, A SUBDIVISION AS RECORDED IN PLAT BOOK 6, PAGE 6, LYING IN SECTION 24, TOWNSHIP 46 SOUTH, RANGE 23 EAST, SAN CARLOS ISLAND, LEE COUNTY, FLORIDA

INSTRUMENT NO. **201300047176**  
SHEET 2 OF 2

THIS INSTRUMENT PREPARED BY:  
BEAN, WHITAKER, LUTZ & KAREH, INC.  
CONSULTING ENGINEERS AND SURVEYORS  
13041 MCGREGOR BLVD. (239) 481-1331  
FORT MYERS, FLORIDA 33919

**NOTES:**  
1. DIMENSIONS SHOWN ARE IN FEET AND DECIMAL PARTS THEREOF.  
2. THE CURVE IS CIRCULAR.  
3. BEARINGS ARE BASED ON THE STATE PLANE CO-ORDINATE GRID-FLORIDA WEST ZONE (NORTH AMERICAN DATUM OF 1983/2007 ADJUSTMENT) HOLDING N.G.S. CONTROL POINT DG4691 LOCATED AT PAGE FIELD.

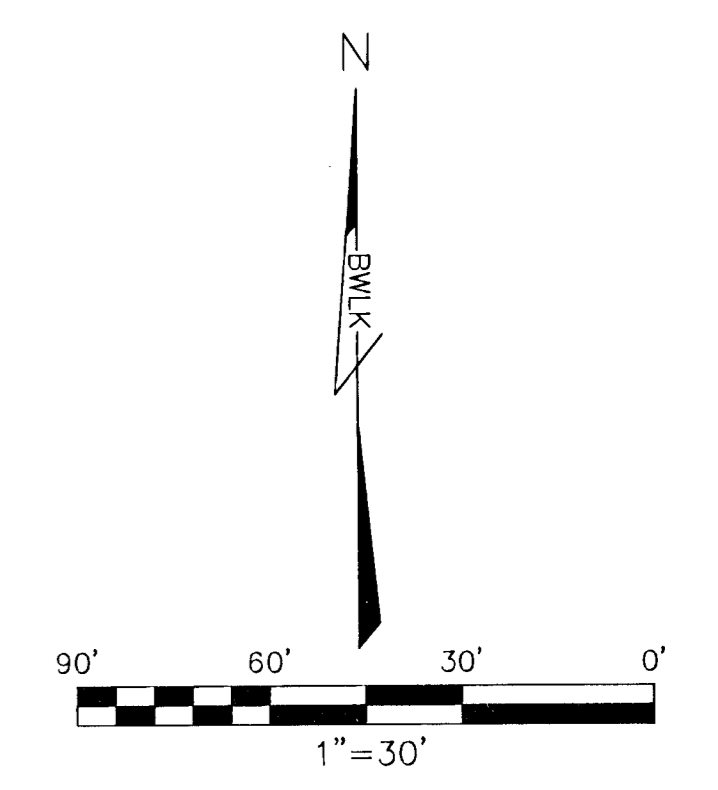
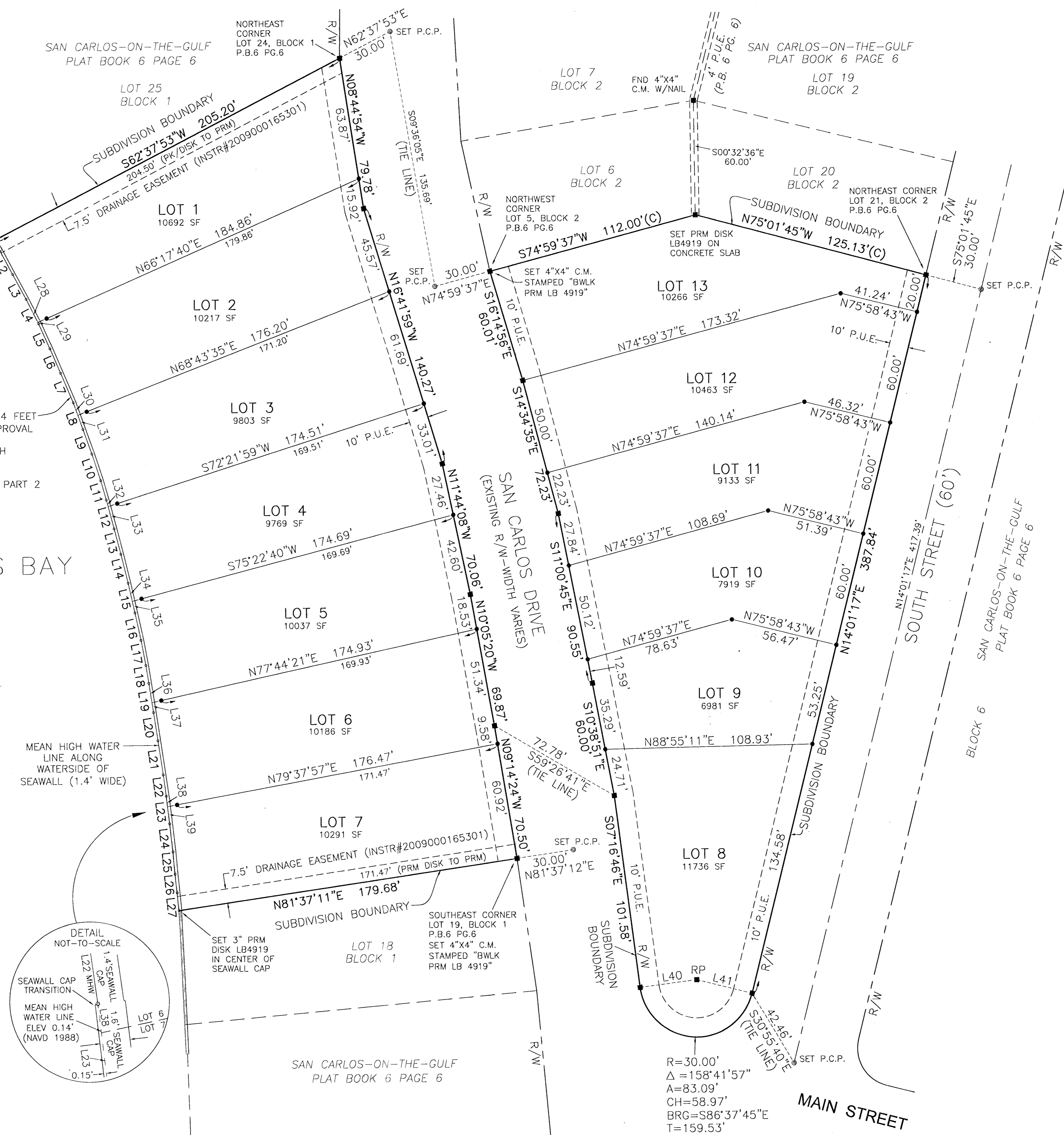
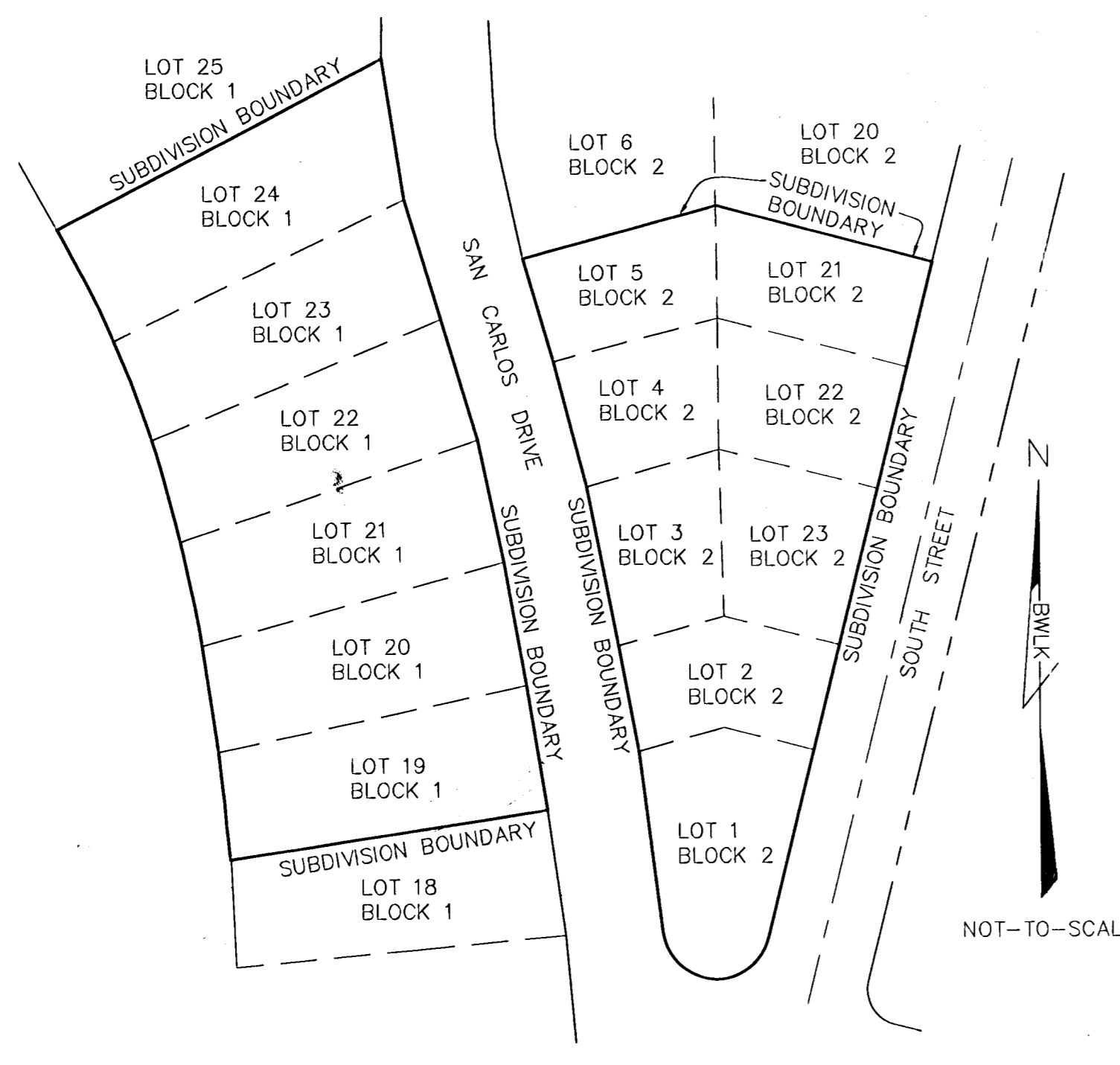
**LEGEND**  
R = RADIUS  
Δ = DELTA  
A = ARC  
CH = CHORD  
BRG = CHORD BEARING  
T = TANGENT  
R.P. = RADIUS POINT  
P.B. = PLAT BOOK  
P.C. = POINT OF CURVE  
P.T. = POINT OF TANGENCY  
P.R.C. = POINT OF REVERSE CURVE  
P.R.M. = PERMANENT REFERENCE MONUMENT  
P.S.M. = PROFESSIONAL SURVEYOR AND MAPPER  
MHW = MEAN HIGH WATER  
PK = PARKER KALON  
N.G.S. = NATIONAL GEODETIC SURVEY  
O.R. = OFFICIAL RECORDS BOOK  
P.U.E. = PUBLIC UTILITY EASEMENT  
D.E. = DRAINAGE EASEMENT  
PG. = PAGE  
PGS. = PAGES  
R/W = RIGHT OF WAY  
SF = SQUARE FEET  
ORIG. = ORIGINAL  
COR. = CORNER  
P.C.P. = PERMANENT CONTROL POINT  
W/ = WITH  
ELEV. = ELEVATION  
N.A.V.D. = NORTH AMERICAN VERTICAL DATUM  
C.M. = CONCRETE MONUMENT

**SYMBOL KEY (UNLESS NOTED OTHERWISE):**  
■ = SET PERMANENT REFERENCE MONUMENT (PRM)  
● = SET 5/8" IRON ROD WITH 2" ALUMINUM DISK STAMPED "BWLK PRM LB 4919"  
● = SET 5/8" IRON ROD WITH CAP STAMPED "BWLK 4919 ORIG. COR."  
● = SET PK NAIL & DISK STAMPED "P.C.P. L54324"

MEAN HIGH WATER ELEVATION 0.14 FEET (N.A.V.D. 1988) AS PER DEP APPROVAL ESTABLISHED BY EXTENDING THE ELEVATION SHOWN AT MEAN HIGH WATER CONTROL TIDE STATION 872-5366 IN ACCORDANCE WITH FLORIDA STATUTES CHAPTER 177 PART 2 (DEP FILE NO. 5275)

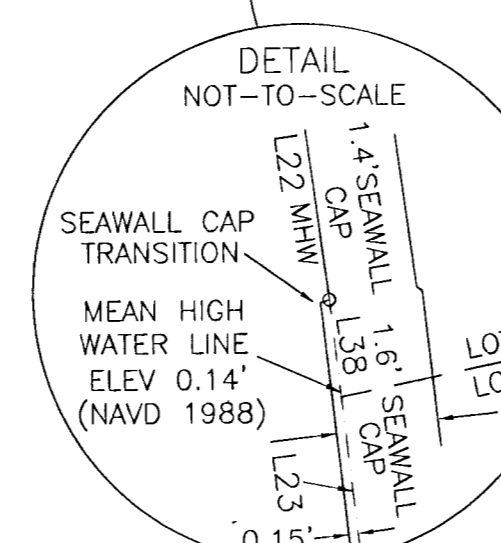
SAN CARLOS BAY

**GRAPHIC DEPICTION OF LEGAL DESCRIPTION**  
LOTS 19 THROUGH 24, BLOCK 1 AND LOTS 1 THROUGH 5 AND LOTS 21 THROUGH 23, BLOCK 2, SAN CARLOS-ON-THE-GULF, A SUBDIVISION AS RECORDED IN PLAT BOOK 6, PAGE 6



**LINE TABLE**  
MEAN HIGH WATER LINE

LINE	BEARING	DISTANCE
L1	S29°29'53"E	6.54'
L2	S27°42'30"E	13.80'
L3	S28°08'58"E	14.83'
L4	S26°30'19"E	14.32'
L5	S23°55'32"E	14.52'
L6	S22°50'12"E	14.13'
L7	S22°58'59"E	16.80'
L8	S19°29'47"E	14.92'
L9	S19°39'04"E	13.71'
L10	S18°03'58"E	14.70'
L11	S15°46'43"E	10.64'
L12	S14°43'21"E	15.72'
L13	S14°33'58"E	13.69'
L14	S13°39'51"E	15.63'
L15	S12°30'06"E	15.95'
L16	S12°23'47"E	14.74'
L17	S10°29'58"E	13.46'
L18	S09°07'47"E	9.41'
L19	S08°47'59"E	15.42'
L20	S08°40'09"E	14.97'
L21	S08°19'10"E	18.13'
L22	S07°52'39"E	11.24'
L23	S06°40'55"E	14.64'
L24	S06°21'57"E	14.83'
L25	S04°49'00"E	11.64'
L26	S06°01'24"E	9.86'
L27	S05°28'53"E	9.43'
L28	S26°30'19"E	13.56'
L29	S26°30'19"E	0.76'
L30	S19°29'47"E	6.95'
L31	S19°29'47"E	7.97'
L32	S14°43'21"E	3.50'
L33	S14°43'21"E	12.22'
L34	S12°30'06"E	9.71'
L35	S12°30'06"E	6.24'
L36	S08°47'59"E	10.11'
L37	S08°47'59"E	5.30'
L38	S06°40'55"E	5.55'
L39	S06°40'55"E	9.09'
L40	N82°43'14"E	30.00'
L41	N75°58'43"W	30.00'



R=30.00'  
Δ=158°41'57"  
A=83.09°  
CH=58.97'  
BRG=S86°37'45"E  
T=159.53'

LDO #2013-00375 / PLT 2013-00019